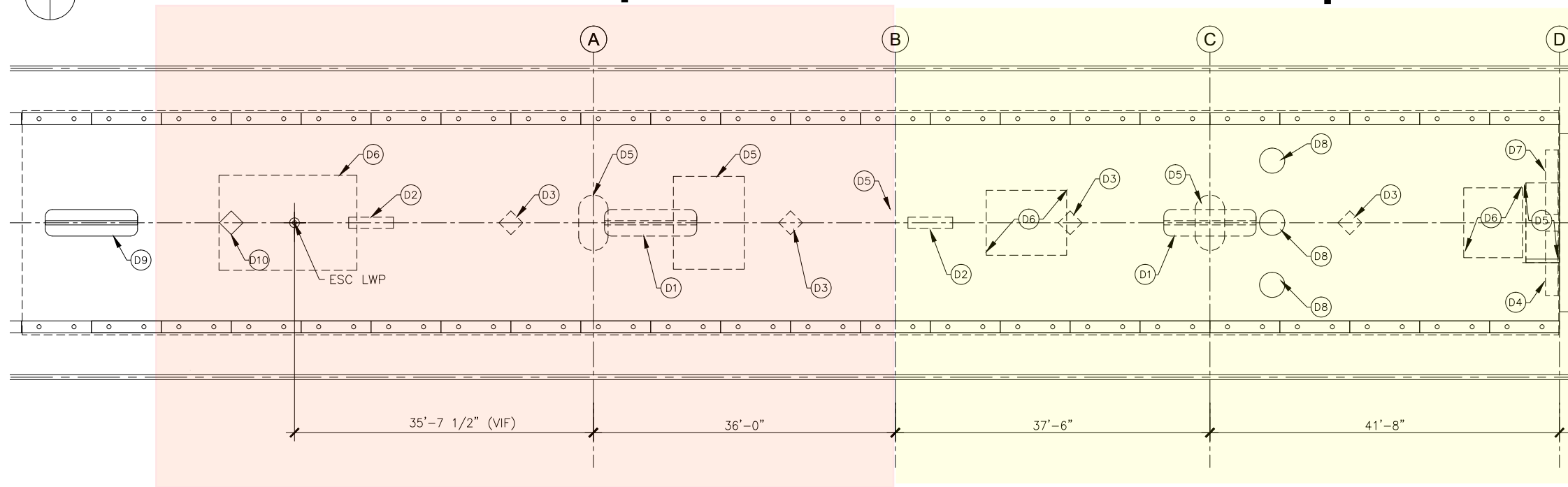


# Platform Plenum Area

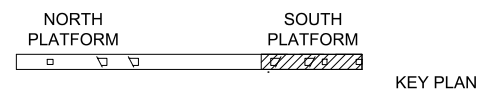


# Detail Map 1

# Detail Map 2



1 PARTIAL PLATFORM PLAN - DEMOLITION - 1B  
 A-100 SCALE: 1/8" = 1'-0"



## DEMOLITION NOTES FOR 1B

- D1 REMOVE AND STORE EXISTING BENCH FOR SALVAGE OR RE-USE.
- D2 REMOVE AND STORE EXISTING DIORAMA FOR SALVAGE OR RE-USE
- D3 REMOVE PYLONS.
- D4 A.R. WILL RELOCATE EXISTING ETEC CABINET. AM3
- D5 REMOVE EXISTING SLAB AS REQUIRED TO FACILITATE INSTALLATION OF PROPOSED COLUMNS, STAIRS AND MECH SHAFT. SEE STRUCT, MECH AND ELECT WORK.
- D6 REMOVE EXISTING SLAB AS REQUIRED TO FACILITATE INSTALLATION OF KNOCK-OUT PANEL FOR PROPOSED ESCALATOR AND ELEVATORS. SEE ELECT & STRUCT WORK.
- D7 A.R. WILL RELOCATE CWS CABINET. AM3
- D8 EXIST MANHOLE COVER TO REMAIN
- D9 EXIST BENCH TO REMAIN
- D10 EXIST PYLON TO REMAIN

## WORK ZONE NOTES

1. DESIGN BUILDER SHALL PERFORM THEIR WORK IN A MANNER THAT ALLOWS FOR FULL USE OF THE STATION DURING PERIODS OTHER THAN AGREED TO STATION CLOSURES AS SCHEDULED.

## ABBREVIATIONS

EXIST	EXISTING
W/	WITH
STRUCT	STRUCTURAL
ARCH	ARCHITECTURAL
ELECT	ELECTRICAL
MECH	MECHANICAL
DWGS	DRAWINGS
CONC	CONCRETE
SYS	SYSTEM
TYP	TYPICAL
MEZZ	MEZZANINE
ELEV	ELEVATOR
ESC	ESCALATOR
COORD	COORDINATE
LWP	LOWER WORKING POINT
UWP	UPPER WORKING POINT
VIF	VERIFY IN FIELD

## GENERAL DEMOLITION NOTES

1. DIMENSIONS BASED ON RECORD DWGS. DESIGN BUILDER SHALL VERIFY EXISTING FIELD CONDITIONS.
2. PRIOR TO DEMOLITION, VERIFY MATERIALS AND EQUIPMENT TO BE SALVAGED. STORE WHERE DIRECTED BY WMATA (OWNER). SOME ITEMS MAY BE INCORPORATED INTO NEW WORK.
3. VERIFY AND MARK ALL UNDER SLAB UTILITIES PRIOR TO THE START OF WORK.
4. REMOVE ALL RUBBISH AND DEMOLITION DEBRIS FROM THE SITE AND DISPOSE OF IN A LAWFUL MANNER.
5. COORDINATE GENERAL CONSTRUCTION DEMOLITION W/ THE WORK OF OTHER TRADES.
6. REPAIR ALL EXIST STRUCTURES, UTILITIES, AND EQUIPMENT, SCHEDULED TO REMAIN, WHICH ARE DAMAGED DURING DEMOLITION OPERATIONS. ALL WORK SCHEDULED TO BE DEMOLISHED, WILL BE REMOVED COMPLETELY INCLUDING ALL FASTENERS, ATTACHMENTS, ACCESSORIES, OR ANY RELATED WORK.
7. DEMOLITION OF CONC SLABS IS SHOWN ON THE DEMOLITION PLAN AS IT RELATES TO DEMOLITION FOR OTHER TRADES SUCH AS STRUCT FOUNDATIONS. SEE ELECT AND STRUCT DOCUMENTS FOR RELATED DEMOLITION WORK.
8. DEMOLITION INCLUDES ALL ITEMS WHETHER OR NOT SHOWN ON THE DWGS, THAT ARE REQUIRED TO BE REMOVED IN ORDER TO INSTALL THE NEW WORK SHOWN ON DRAWING A-102, A-103 AND OTHER PORTIONS OF THE CONTRACT DOCUMENTS.
9. ALL SURFACES TO REMAIN SHALL BE REFINISHED TO REPAIR ALL HOLES, SCRATCHES, DENTS, MARS, PITTING, ADHESIVE, BAD JOINTS, DEFECTIVE CMU, ETC. TO BE ACCEPTABLE IN EVERY WAY TO RECEIVE NEW FINISHES.
10. DESIGN BUILDER WILL COORDINATE LOCATIONS OF ALL UTILITIES IN PLENUM AREA BELOW PLATFORM AND VERIFY THAT ALL WORK IS COORDINATED.
11. DESIGN BUILDER IS RESPONSIBLE FOR ALL EQUIPMENT, FURNISHING AND SIGNAGE WHETHER SHOWN OR NOT. DESIGN BUILDER SHALL COORDINATE, REMOVE, PROTECT AND REINSTALL ALL EQUIPMENT, FURNISHING AND SIGNAGE AS REQUIRED TO PROVIDE FOR FUNCTIONAL OPERATIONS BY WMATA.

FINAL CONTRACT NO. FQ15093

DESIGNED AD	2/20/15 DATE	REFERENCE DRAWINGS		REVISIONS		
		NUMBER	DESCRIPTION	DATE	BY	DESCRIPTION
DRAWN AD	2/20/15 DATE			7/31/15	C.R.	REVISED DEMO NOTES - AM3
CHECKED RES	2/20/15 DATE					
APPROVED JP	2/20/15 DATE					

### WASHINGTON METROPOLITAN AREA TRANSIT AUTHORITY

DEPARTMENT OF TRANSIT INFRASTRUCTURE  
 AND ENGINEERING SERVICES  
 OFFICE OF INFRASTRUCTURE RENEWAL PROGRAM



APPROVED \_\_\_\_\_

SUBMITTED \_\_\_\_\_  
 PROJECT MANAGER

### RED LINE REHAB.-FRIENDSHIP HEIGHTS TO GROSVENOR - PART 6

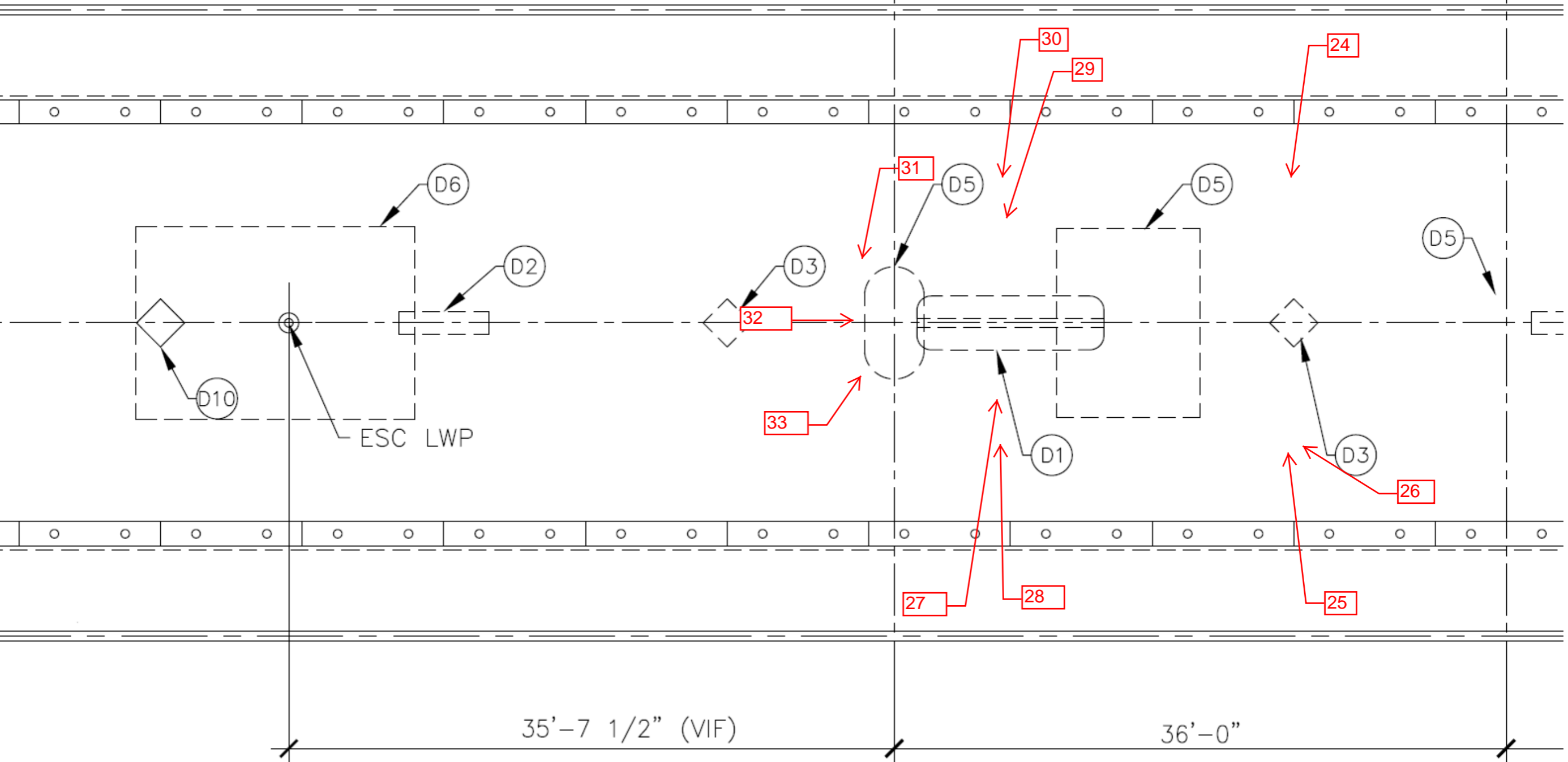
PHASE 1B  
 PLATFORM DEMOLITION PLAN

SCALE AS SHOWN	DRAWING NO. A09-A-100	SHEET NO. M1272-191
----------------	-----------------------	---------------------

# Detail Map 1

A

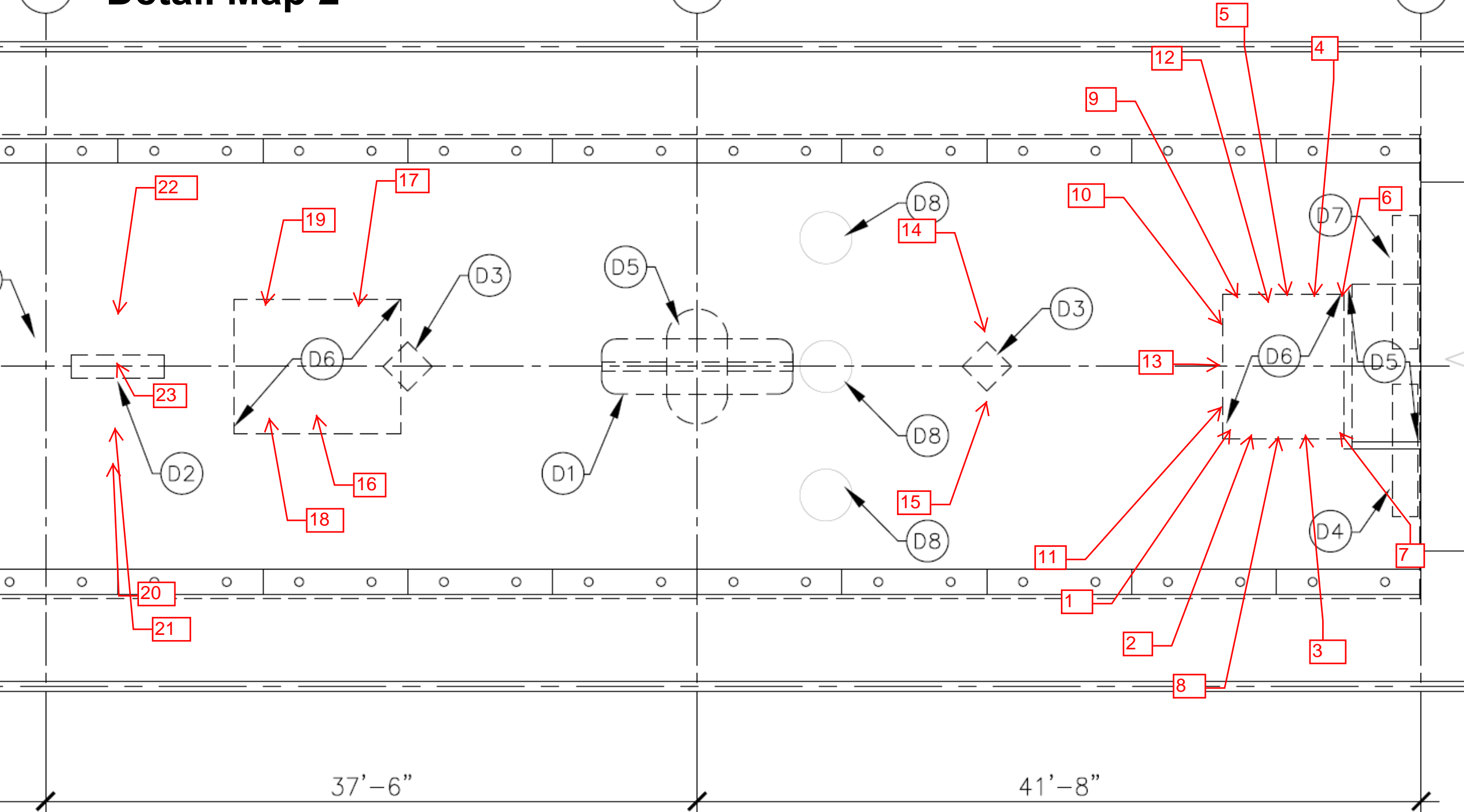
B



# B Detail Map 2

C

D



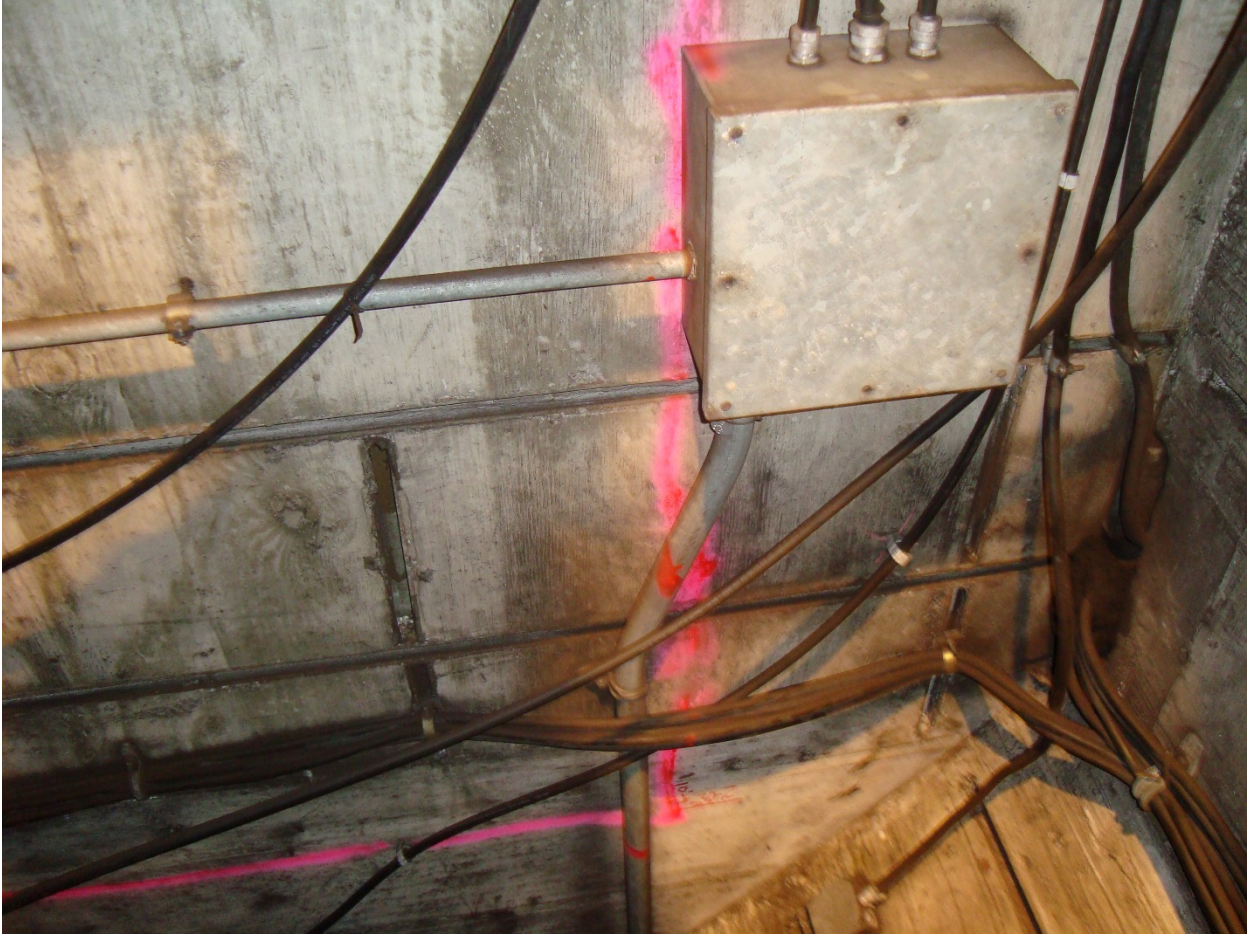
41'-8"



1-Bethesda Plenum, South Elevator pit, looking up, 8-2-2015



2-Bethesda Plenum, South Elevator pit, looking up, 8-2-2015



3-Bethesda Plenum, South Elevator pit, looking up, 8-2-2015



4-Bethesda Plenum, South Elevator pit, looking up, 8-2-2015





5-Bethesda Plenum, South elevator pit, looking up, 8-2-2015



6-Bethesda Plenum, South Elevator pit, looking up, 8-2-2015



7-Bethesda Plenum, South Elevator pit, looking up, 8-2-2015



8- Bethesda Plenum, South Elevator pit, looking up, 8-2-2015



9-Bethesda Plenum, South Elevator pit, looking up, 8-2-2015



10-Bethesda Plenum, South Elevator pit, looking up, 8-2-2015



11-Bethesda Plenum, South elevator pit, looking up, 8-2-2015



12-Bethesda Plenum, South Elevator pit, looking East, 8-2-2015





13-Bethesda Plenum, South Elevator pit, looking down, 8-2-2015



14-Bethesda Plenum, 2'X2' Mezz. Column, looking up, 8-2-2015



15-Bethesda Plenum, 2'X2' Mezz. column, looking down, 8-2-2015



16-Bethesda Plenum, North elevator pit, looking up, 8-2-2015



17-Bethesda Plenum, North elevator pit, looking up, 8-2-2015



18-Bethesda Plenum, North Elev. Pit, looking down, 8-2-2015



19-Bethesda Plenum, NorthElev. Pit. looking east, 8-2-2015



20-Bethesda Plenum, 5'X2' Mezz. column, looking up, 8-2-2015





21- Bethesda Plenum, 5'X2' column, looking up, 8-2-2015



22-Bethesda Plenum, 5'X2' Mezz. column, looking down, 8-2-2015



23-Bethesda Plenum, 5'X2' Mezz. column, looking down, 8-2-2015



24-Bethesda Plenum, East stair column, looking up, 8-2-2015



25-Bethesda Plenum, West stair column, looking up, 8-2-2015



26-Bethesda Plenum, west stair column, looking down, 8-2-2015



27-Bethesda Plenum, Stair footing, looking up, 8-2-2015



28-Bethesda Plenum, Stair footing, looking up, 8-2-2015





29-Bethesda Plenum, Stair footing, looking down, 8-2-2015



30-Bethesda Plenum, Stair footing , looking down, 8-2-2015



31-Bethesda Plenum 5'X2' Mezz. column, looking down, 8-2-2015



32-Bethesda Plenum 5'X2' Mezz. column looking up, 8-2-2015



33-Bethesda Plenum 5'X2' Mezz. columns looking up, 8-2-2015

**Additional Plenum Photographs not Designated on the Maps.**



A09 Platform South Side Plenum Inbound Side looking south



A09 Platform South Side Plenum Inbound Side looking south



A09 Platform South Side Plenum Inbound Side looking north





A09 Platform South Side Plenum looking towards South Wall



A09 Platform South Side Plenum South End wall shaft looking up



A09 Platform South Side Plenum South End wall shaft looking up